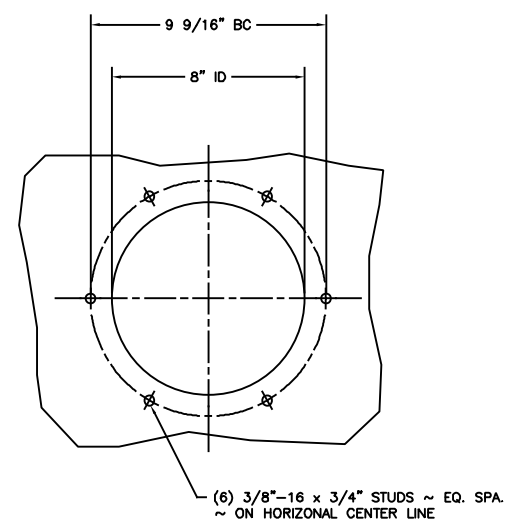
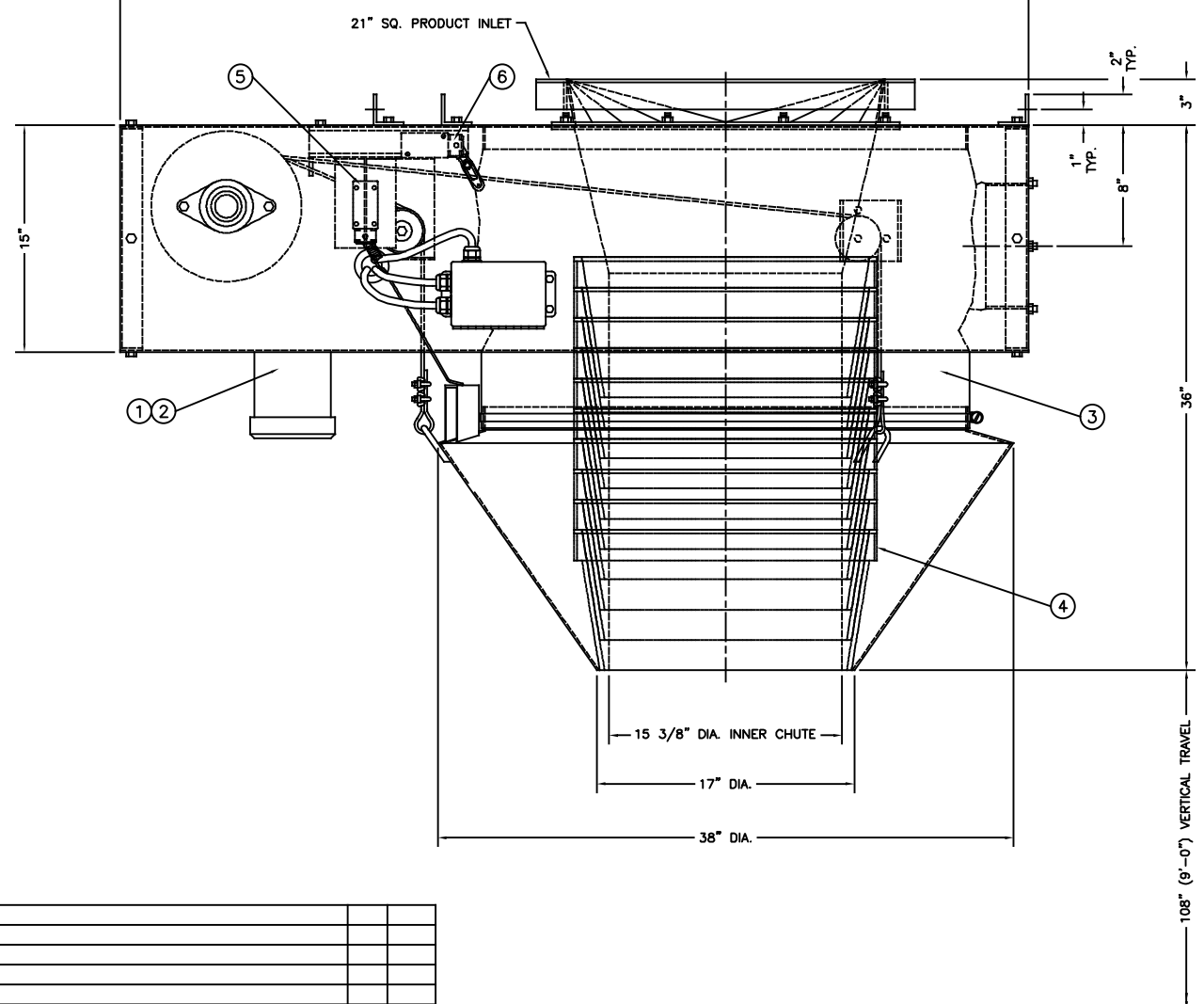
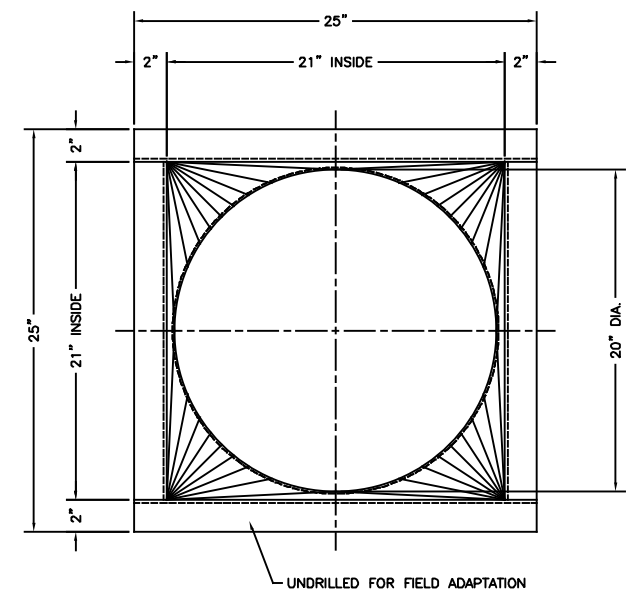


**CERTIFIED FINAL
FOR CONSTRUCTION**



NEGATIVE AIR CONNECTION DETAIL



**21" SQ. PRODUCT INLET FLANGE DETAIL
FLANGE MATERIAL: 2" x 2" x 3/16" ANGLE**

LEGEND

- ① TORQube ~TYPE QC REDUCER w/ 3/4 HP - 1800 RPM TEXP MOTOR (56C-FACE) (3/60/230-460 VAC) FOR CABLE HOIST DRIVE.
- ② (3) CABLE HOIST ASSEMBLY w/ DOUBLE CHAIN & SPROCKET DRIVE (NOT SHOWN).
- ③ FLEXIBLE ROADSTAR 18 OUTER SHROUD ASSEMBLY w/GALVANIZED STEEL REINFORCING RINGS.
- ④ MODIFIED INTERNAL SELF-STACKING PRODUCT GUIDE CONE ASSEMBLY ~ 5/16" THK. URETHANE with 16" DIA. THRUPUT.
- ⑤ FULL UP LIMIT SWITCH w/ ACTUATOR ROD.
- ⑥ (2) SLACK-CABLE LIMIT SWITCHES w/ ACTUATOR ASSEMBLY.

SLACK-CABLE & FULL UP LIMIT SWITCHES ARE FACTORY WIRED TO A J.I.C. ENCLOSURE

CONSTRUCTION:

PRODUCT CONTACT PARTS TO BE 10 GA. CARBON STEEL
NON-PRODUCT CONTACT PARTS TO BE 12 GA. CARBON STEEL

APPLICATION: LOADING RAIL CARS
PRODUCT: DRIED GRAIN
LOADING RATE: 319 TONS/Hr
BULK DENSITY: 32 LBS./CF

APPROX. EQUIPMENT WT. ~ 800 LBS.
ELECTRICAL SCHEMATIC: C-800524
CUSTOMER P.O. No. 206621

REV.	DATE	DESCRIPTION	BY	APP'D

DRAWN BY J. KURZ DATE 11/21/06 CHECKED BY SCALE ORDER RSS-1600 DO NOT SCALE DWG.	<p>SLY Incorporated LOADING SPOUT & POSITIONER PRODUCTS P.O. BOX 5939, CLEVELAND, OHIO 44101 (440)891-3200 * FAX:(440)891-3210 WWW.SLYINC.COM FOR REPLACEMENT PARTS CALL * 1-800-334-2957</p>	DESCRIPTION XP-12 STANDARD LOADING SPOUT w/36" R.H./108" (9'-0") VERT. TRAVEL JOB D & D PRODUCTS 1872
--	--	---